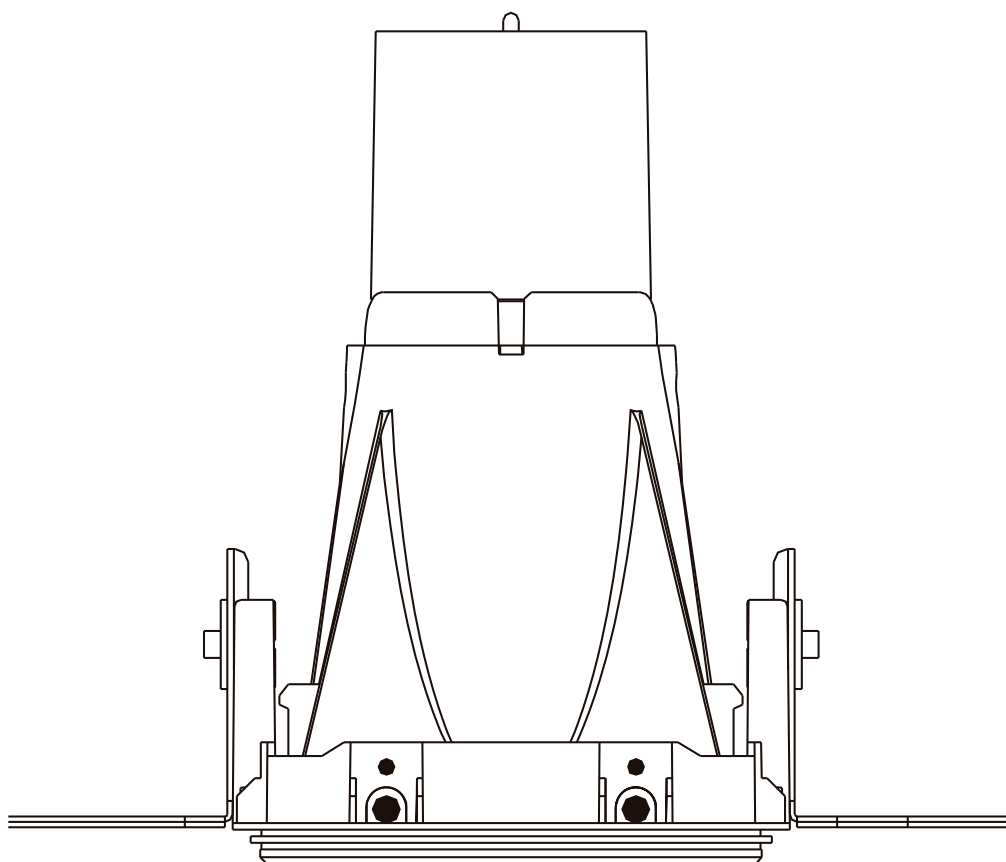


DARKLIGHT DESIGN

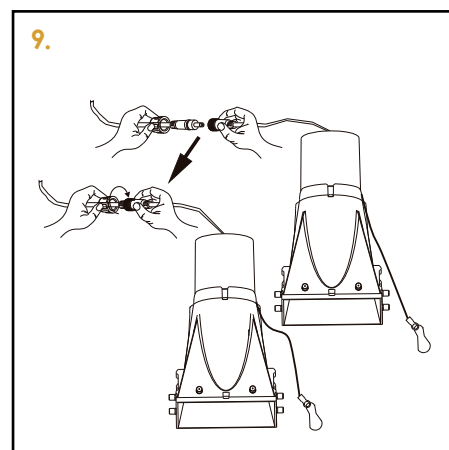
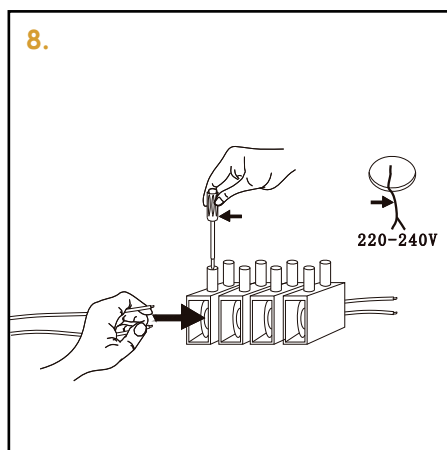
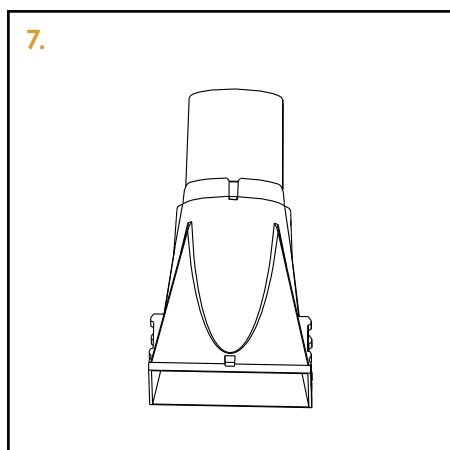
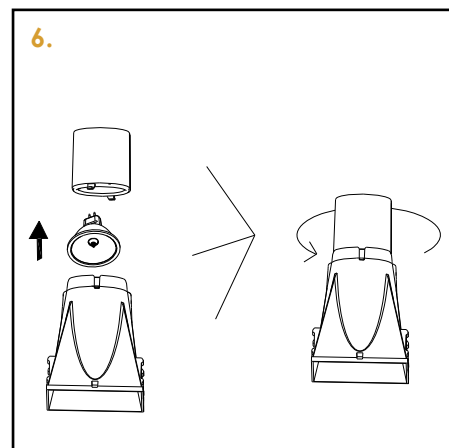
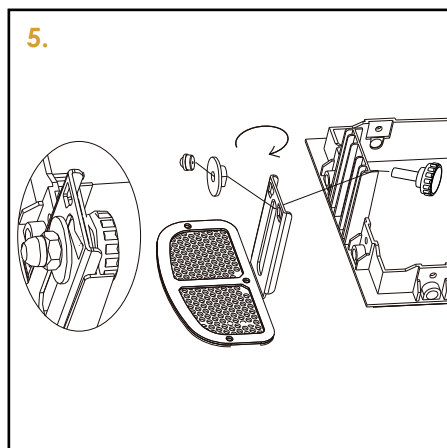
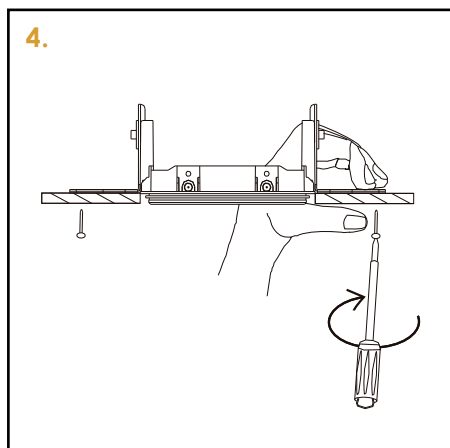
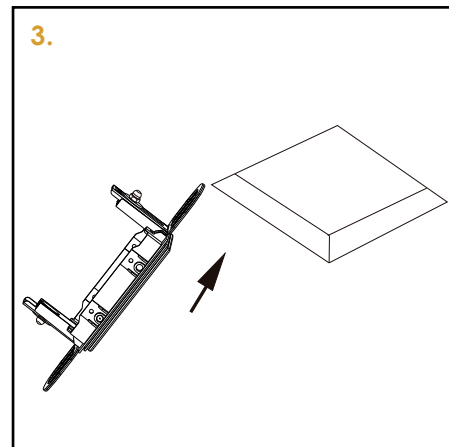
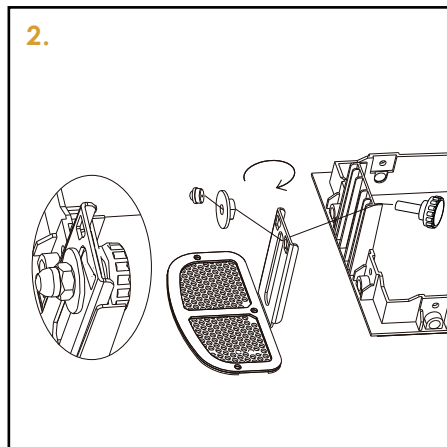
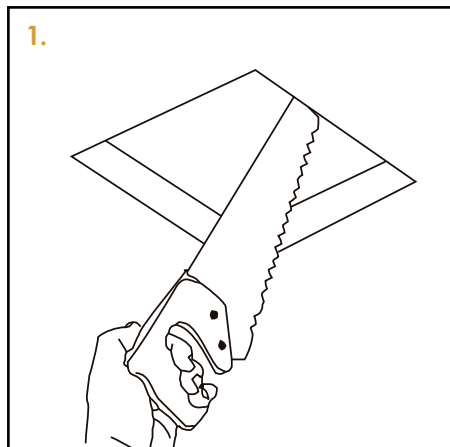
DARKLIGHT DESIGN HORA INSTALLATION INSTRUCTIONS



DARKLIGHT DESIGN

DARKLIGHT DESIGN HORA INSTALLATION INSTRUCTIONS

INSTALLATION INSTRUCTIONS



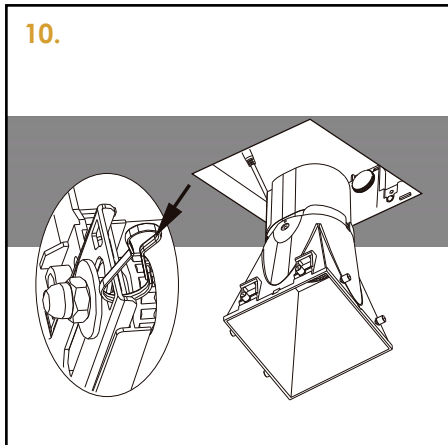
*Please note: the driver must be installed remotely as it cannot be accessed through the cut-out hole

DARKLIGHT DESIGN

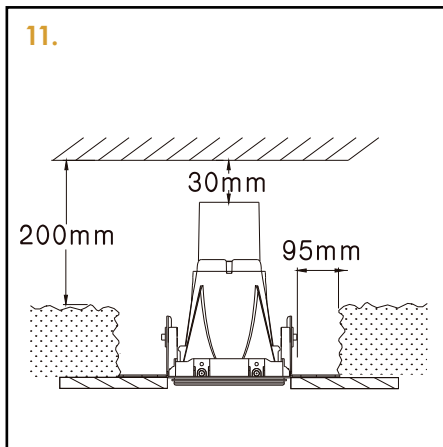
DARKLIGHT DESIGN HORA INSTALLATION INSTRUCTIONS

INSTALLATION INSTRUCTIONS

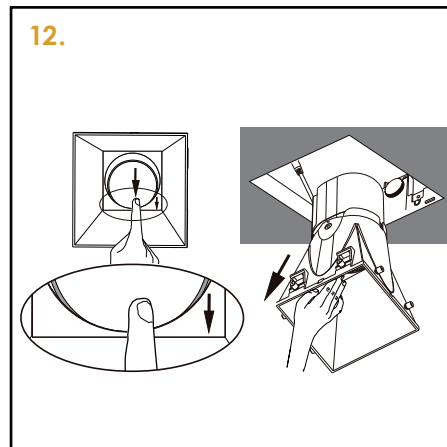
10.



11.



12.

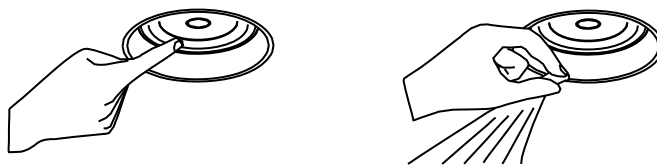


DARKLIGHT DESIGN

DARKLIGHT DESIGN HORA INSTALLATION INSTRUCTIONS

DISCLAIMER

- Only use power supplies which are certified according to the applicable IEC or 3C standards
- Check that the rating of the power supply matches that of the luminaire
- The maximum current rating must be taken into account
- The indicated typical voltage must not be used to select a constant voltage power supply. It is intended to be used to select a constant current power supply that is able to cover that typical voltage
- Take appropriate ESD measures. Avoid touching bare conductors
- LED luminaires or LED drivers should never be cleaned with chemical substances. LEDs can be damaged by contact with certain chemicals or chemical gasses
- The following substances have been proven to have a negative influence on LED performance, and must not be used in the direct environment of the LED luminaire:
 - Methyl acetate or ethyl acetate (i.e., nail polish remover)
 - Formaldehyde or butadiene (including Ashland PLIOBOND adhesive)
 - Loctite Sumo Glue
 - Gorilla Glue
 - Bleach, Bleach-containing cleaners, sprays
 - Loctite 384 adhesive
 - Loctite 7387 activator
- Remove insulation and/or provide sufficient ventilation so that the indicated maximum temperature is not surpassed
- Only connect the driver with the fitting only after the power is off. LEDs are susceptible to switching transients
- Respect polarity
- Don't test LED luminaires one by one on a power supply that is switched on



Do not clean the LED chip and reflector by hand or with a towel!